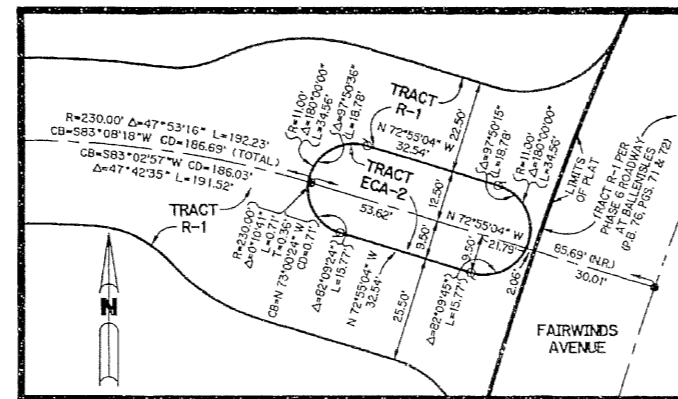
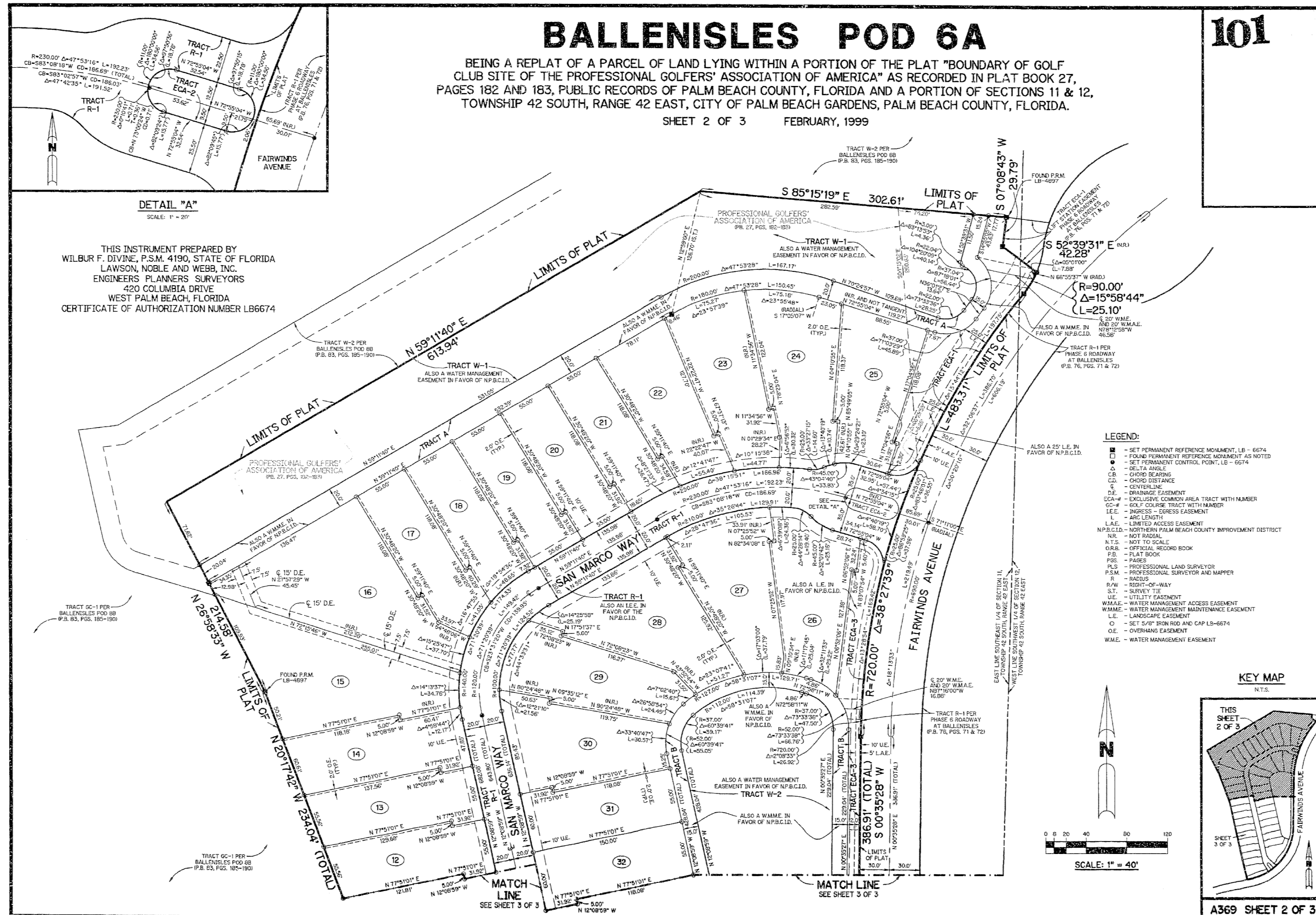


BALLENISLES POD 6A

BEING A REPLAT OF A PARCEL OF LAND LYING WITHIN A PORTION OF THE PLAT "BOUNDARY OF GOLF CLUB SITE OF THE PROFESSIONAL GOLFERS' ASSOCIATION OF AMERICA" AS RECORDED IN PLAT BOOK 27, PAGES 182 AND 183, PUBLIC RECORDS OF PALM BEACH COUNTY, FLORIDA AND A PORTION OF SECTIONS 11 & 12, TOWNSHIP 42 SOUTH, RANGE 42 EAST, CITY OF PALM BEACH GARDENS, PALM BEACH COUNTY, FLORIDA.

SHEET 2 OF 3 FEBRUARY, 1999

101

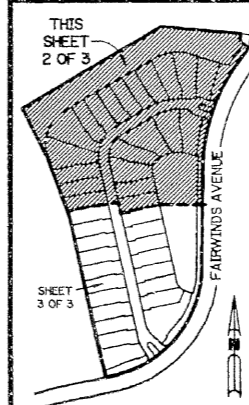


DETAIL "A"
SCALE: 1" = 20'

THIS INSTRUMENT PREPARED BY
WILBUR F. DIVINE, P.S.M. 4190, STATE OF FLORIDA
LAWSON, NOBLE AND WEBB, INC.
ENGINEERS PLANNERS SURVEYORS
4200 COLUMBIA DRIVE
WEST PALM BEACH, FLORIDA
CERTIFICATE OF AUTHORIZATION NUMBER LB6674

- LEGEND:**
- SET PERMANENT REFERENCE MONUMENT, LB - 6674
 - FOUND PERMANENT REFERENCE MONUMENT AS NOTED
 - SET PERMANENT CONTROL POINT, LB - 6674
 - △ DELTA ANGLE
 - CROSS BEARINGS
 - CURVE BEARINGS
 - CURVE DISTANCE
 - CENTERLINE
 - DRAINAGE EASEMENT
 - EASEMENT COMMON AREA TRACT WITH NUMBER
 - GOLF COURSE TRACT WITH NUMBER
 - J.E. - JEFFERSON EASEMENT
 - L - ARC LENGTH
 - L.A.E. - LIMITED ACCESS EASEMENT
 - N.P.B.C.I.D. - NORTHERN PALM BEACH COUNTY IMPROVEMENT DISTRICT
 - N.S. - NOT TO SCALE
 - O.R.B. - OFFICIAL RECORD BOOK
 - P.B. - PLAT BOOK
 - P.M. - PLANNING
 - P.L.S. - PROFESSIONAL LAND SURVEYOR
 - P.S.M. - PROFESSIONAL SURVEYOR AND MAPPER
 - R - RADIUS
 - R.O.W. - RIGHT-OF-WAY
 - S.T. - SURVEY TIE
 - U.E. - UTILITY EASEMENT
 - W.M.A.E. - WATER MANAGEMENT ACCESS EASEMENT
 - W.M.M. - WATER MANAGEMENT MAINTENANCE EASEMENT
 - L.E. - LANDSCAPE EASEMENT
 - SET 5/8" IRON ROD AND CAP LB-6674
 - OVERLAP EASEMENT
 - W.M.E. - WATER MANAGEMENT EASEMENT

KEY MAP



A369 SHEET 2 OF 3